



PSD2 API Documentation

International Trade & Transaction Banking

Summary

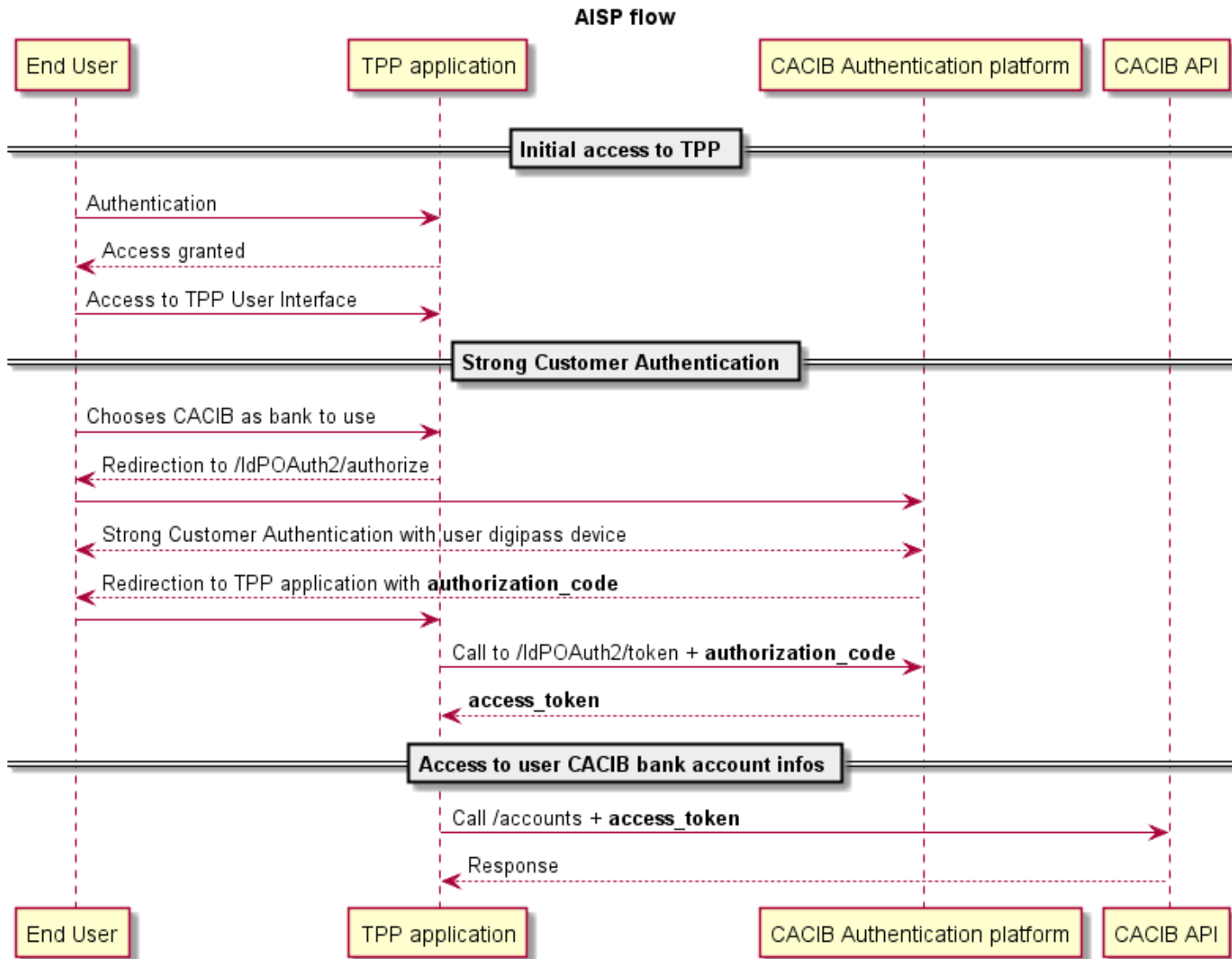
- 1 Introduction
- 2 Cinematics
- 3 Swagger documentation
- 4 URLs



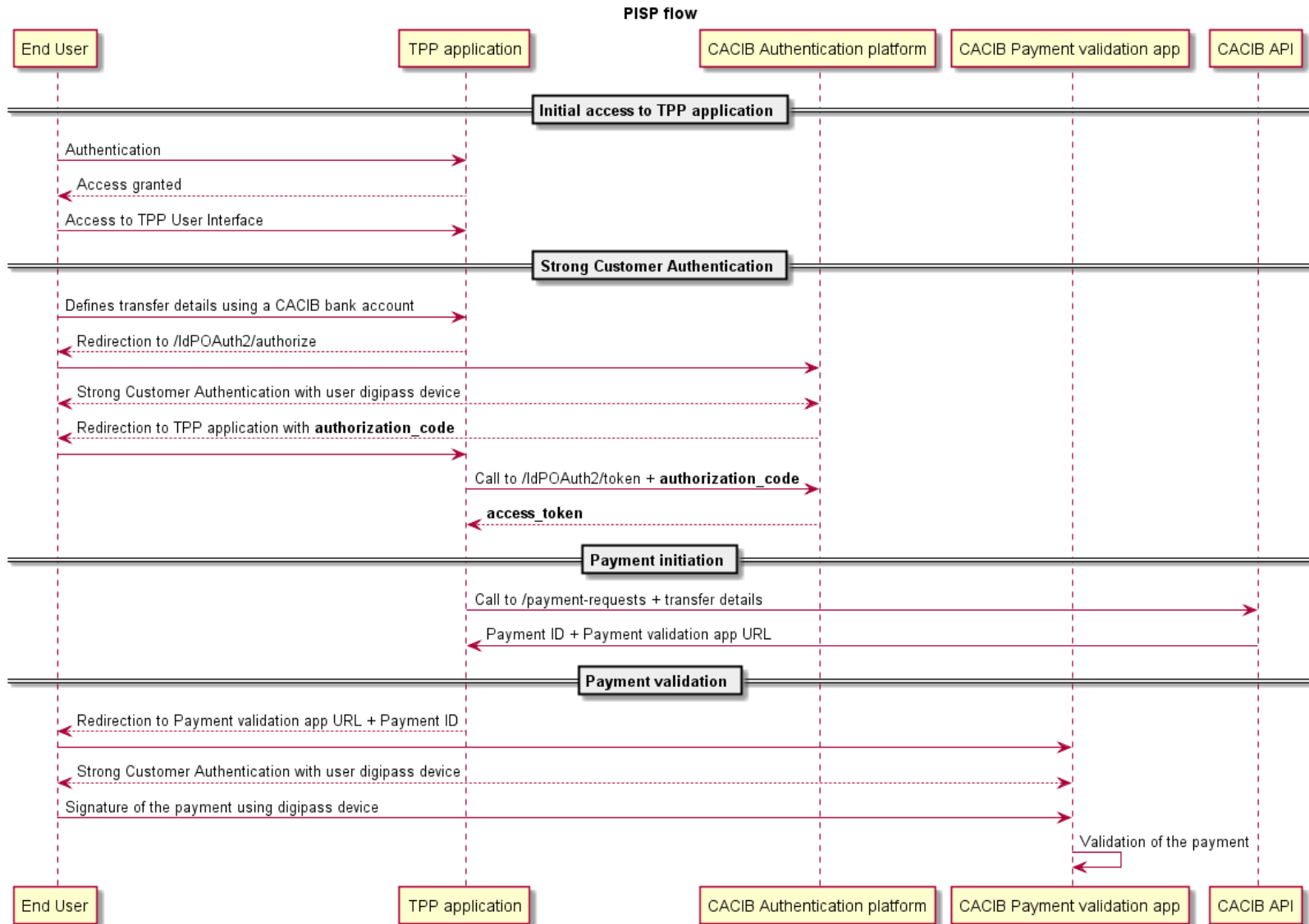
■ **In order to allow TPP to connect to our sandbox environment and test CACIB APIs exposed for PSD2, 3 sets of documentation are detailed in the next slides:**

- Cinematic for Account information and Payment initiation
- Swagger documentation : CACIB Authentication & AIS/PIS APIs
- URLs

Cinematics: AISP



Cinematics: PISP



Swagger documentation



■ Documentation is available on CACIB portal

<https://www.ca-cib.com/our-solutions/international-trade-transaction-banking/transaction-banking/api-platform>

■ CACIB Authentication Platform

- This swagger file provides documentation about CACIB Authentication platform APIs. This documentation can be used by TPPs who want to use CACIB APIs for PSD2 access.
- The file name is 'usignon.yaml' and is available on CACIB's portal

■ Optim.net PSD2 API

- This swagger file provides documentation for CACIB Account information & Payment initiation APIs. This documentation can be used by TPPs that want to use CACIB APIs for PSD2 purpose.
- The file name is 'optim_psd2_1.1.yaml' and is available on CACIB's portal

SANDBOX URLs



- **CACIB Authentication Platform, URLs exposed for PSD2 :**
 - https://api-gateway-asia.preprod.ca-cib.com/connect_psd2/v1/authorize/idp1
 - https://api-gateway-asia.preprod.ca-cib.com/connect_psd2/v1/token/idp1
 - https://api-gateway-asia.preprod.ca-cib.com/connect_psd2/v1/userinfo/idp1
 - https://api-gateway-asia.preprod.ca-cib.com/connect_psd2/v1/introspect/idp1

- **Optim.net PSD2 API, URLs exposed for PSD2. Base URL :**
 - <https://api-gateway-asia.preprod.ca-cib.com/psd2/v1/>

PRODUCTION URLS



■ CACIB Authentication Platform, URLs exposed for PSD2 :

- https://api-gateway-asia.ca-cib.com/connect_psd2/v1/authorize/idp1
- https://api-gateway-asia.ca-cib.com/connect_psd2/v1/token/idp1
- https://api-gateway-asia.ca-cib.com/connect_psd2/v1/userinfo/idp1
- https://api-gateway-asia.ca-cib.com/connect_psd2/v1/introspect/idp1

■ Optim.net PSD2 API, URLs exposed for PSD2. Base URL :

- <https://api-gateway-asia.ca-cib.com/psd2/v1/>