



# PSD2 API Documentation



International Trade & Transaction Banking



# Summary

- 1 Introduction
- 2 Cinematics
- 3 Swagger documentation
- 4 URLs



# Introduction

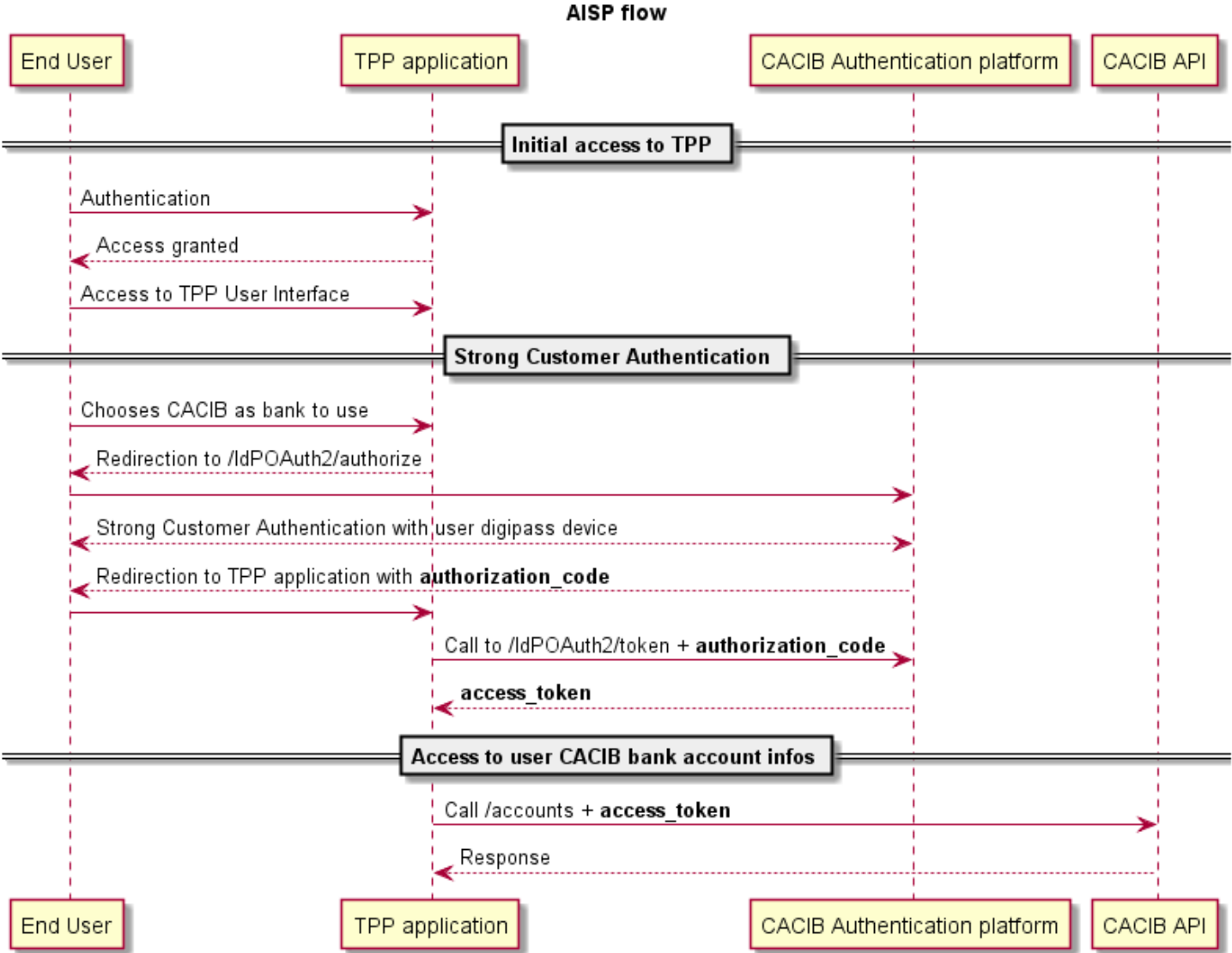
---

■ **In order to allow TPP to connect to our sandbox environment and test CACIB APIs exposed for PSD2, 3 sets of documentation are detailed in the next slides:**

- Cinematic for Account information and Payment initiation
- Swagger documentation : CACIB Authentication & AIS/PIS APIs
- URLs

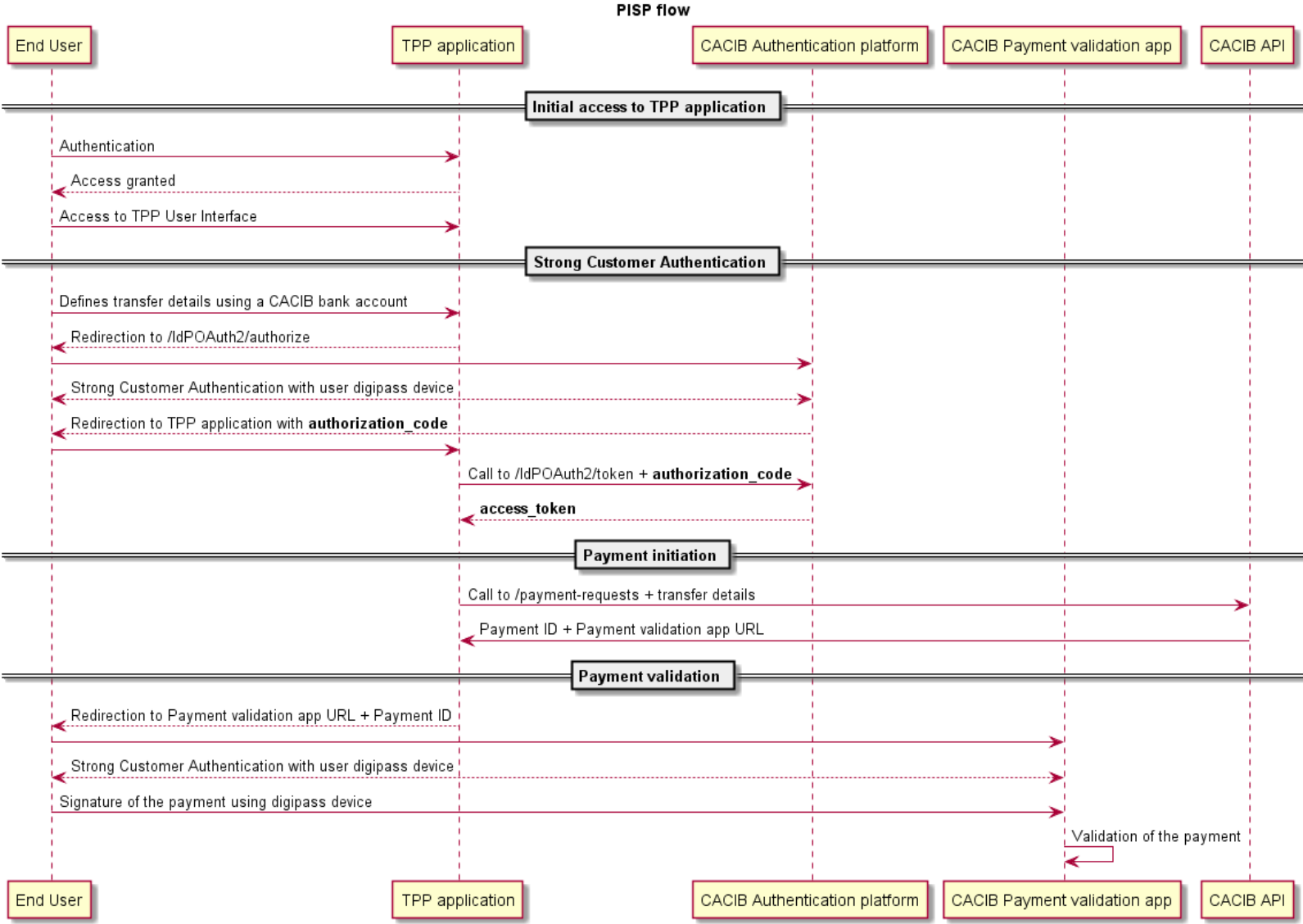


# Cinematics: AISP





# Cinematics: PISP





# Swagger documentation

---

- **Documentation is available on CACIB portal**

<https://www.ca-cib.com/our-solutions/international-trade-transaction-banking/transaction-banking/api-platform>

- **CACIB Authentication Platform**

- This swagger file provides documentation about CACIB Authentication platform APIs. This documentation can be used by TPPs who want to use CACIB APIs for PSD2 access.
- The file name is 'usignon.yaml' and is available on CACIB's portal

- **Optim.net PSD2 API**

- This swagger file provides documentation for CACIB Account information & Payment initiation APIs. This documentation can be used by TPPs that want to use CACIB APIs for PSD2 purpose.
- The file name is 'optim\_psd2\_1.1.yaml' and is available on CACIB's portal



# SANDBOX URLs

---

- **CACIB Authentication Platform, URLs exposed for PSD2 :**

- <https://usignon.pre.ca-cib.com/IdPOAuth2/authorize/idp1>
- <https://usignon.pre.ca-cib.com/IdPOAuth2/token/idp1>
- <https://usignon.pre.ca-cib.com/IdPOAuth2/userinfo/idp1>
- <https://usignon.pre.ca-cib.com/IdPOAuth2/introspect/idp1>

- **Optim.net PSD2 API, URLs exposed for PSD2. Base URL :**

- <https://www.optimnetdemo.ca-cib.com/psd2/v1/>



# PRODUCTION URLS

---

- **CACIB Authentication Platform, URLs exposed for PSD2 :**

- <https://usignon.ca-cib.com/IdPOAuth2/authorize/idp1>
- <https://usignon.ca-cib.com/IdPOAuth2/token/idp1>
- <https://usignon.ca-cib.com/IdPOAuth2/userinfo/idp1>
- <https://usignon.ca-cib.com/IdPOAuth2/introspect/idp1>

- **Optim.net PSD2 API, URLs exposed for PSD2. Base URL :**

- <https://www.optimnet.ca-cib.com/psd2/v1/>