

PREMIUM CLIENT SOLUTIONS



Private Equity Services by Crédit Agricole Group

CRÉDIT
AGRICOLE
GROUP



caceis
INVESTOR SERVICES



CRÉDIT AGRICOLE
CORPORATE & INVESTMENT BANK



INDOSUEZ
WEALTH MANAGEMENT

YOUR PREFERRED BANKING PARTNER



Your expert in asset servicing

CACEIS is one of the leading depositary banks and fund administrators in Europe and the number one depositary in France for private equity, private debt and infrastructure funds. The dedicated private equity, real estate and securitisation business line meets all clients' needs from depositary to financing. CACEIS provides clients with banking services, middle-office outsourcing and customised reporting, with the support of highly skilled teams and an efficient organisation across Europe. Each client has one single point of contact, whatever the fund's domiciliation.



Your bank for your fund financing and investments

Crédit Agricole CIB offers a unique tailor-made client relationship and experience. The bank provides extensive financing, advisory and services encompassing a well-known leadership in LBO, infrastructure and real estate financing, a full-fledged advisory franchise, a strong positioning in equity bridge financing, a strong market-making expertise in high yield bonds, a value-added hedging offer in major currencies and global transaction banking solutions dedicated to funds and portfolio companies.

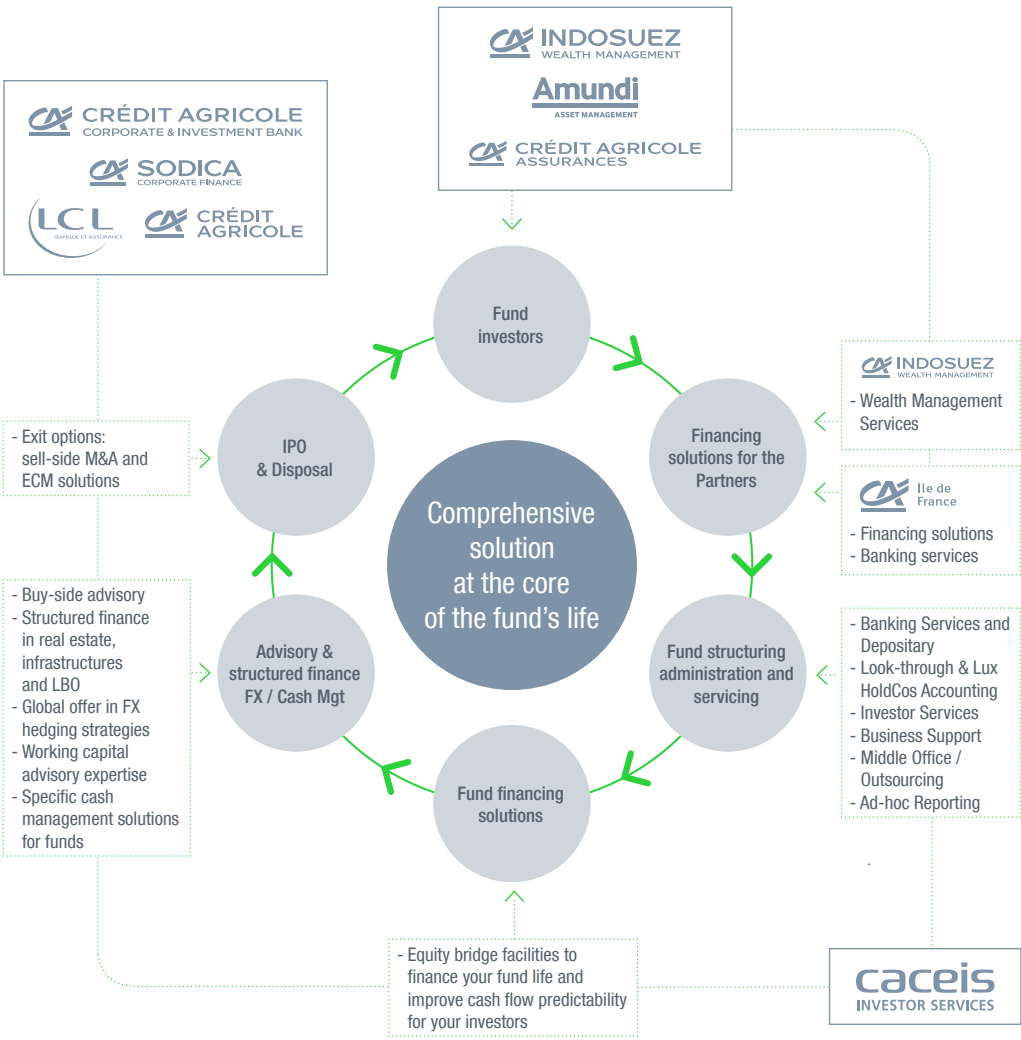


Architects of Wealth

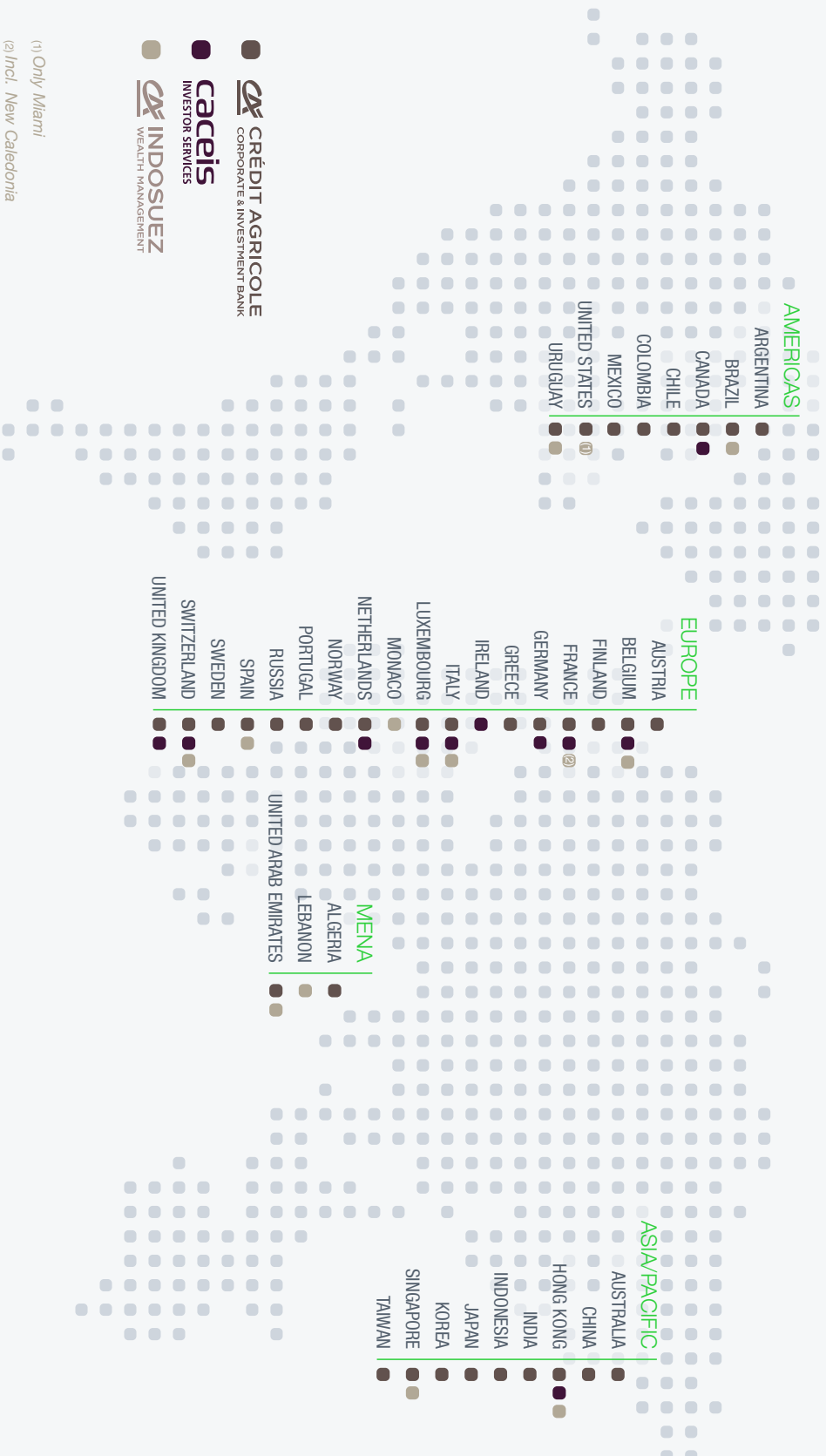
Indosuez Wealth Management offers a tailored approach that enables clients to manage, protect and pass on their wealth according to their specific needs. Our teams take a comprehensive view and provide expert advice and exceptional service, offering a wide range of solutions for the management of both personal and business assets.

A COMPREHENSIVE OFFER FOR PRIVATE EQUITY, DEBT, REAL ESTATE & INFRASTRUCTURE FUNDS

The Crédit Agricole Group, through its subsidiaries, provides you with a dedicated and integrated offer of financing, investment advisory, transaction solutions and depositary banking. Our ambition is to become your preferred banking partner through a “one-stop shop”.



GLOBAL PRESENCE



-   **CRÉDIT AGRICOLE**
CORPORATE & INVESTMENT BANK
-  **caceis**
INVESTOR SERVICES
-   **INDOSUEZ**
WEALTH MANAGEMENT

(1) Only Miami

(2) Incl. New Caledonia

A STRONG GLOBAL BANKING GROUP

CRÉDIT AGRICOLE GROUP

\$98.96bn

Tier One Capital Base
(as at 30/09/2018)

#2

bank by Tier One
Capital in Europe
(The Banker, July 2018)

14.9%

Common Equity
Tier One Ratio
(as at 30/09/2018)

€5.3bn

Net Income Group Share
(as at 30/09/2018)

#13

bank by Tier One Capital worldwide
(The Banker, July 2018)

CRÉDIT AGRICOLE S.A. RATINGS

**RATING
AGENCY**

**SHORT
TERM**

**LONG
TERM**

**S&P GLOBAL
RATINGS**
(October 2018)

A-1

A+
(stable outlook)

FITCH RATINGS
(December 2018)

F1

A+
(stable outlook)

MOODY'S
(July 2018)

P-1

A1
(positive outlook)

OUR KEY FIGURES

270

dedicated professionals
to Private Equity funds

20 years

of experience
with funds clients

+2,000 funds

under depositary
in Europe

+600 funds

under administration
in Europe

December 2018

Your key contacts:

CRÉDIT AGRICOLE CIB

Stéphane BARRET, Global Head of Private Equity Services and Funds coverage
+ 33 1 57 87 18 08, stephane.barret@ca-cib.com

Carine SILVE, Private Equity Funds coverage
+ 33 1 57 87 27 77, carine.silve@ca-cib.com

Guillaume RICHARD, Infrastructure Funds coverage
+44 20 72 14 54 51, guillaume.richard@ca-cib.com

Régis AUBERT, Real Estate Funds coverage
+33 1 41 89 11 71, regis.aubert@ca-cib.com

CACEIS

Bruno BOURBONNAUD, Global Head of PERES Global Services
+ 33 1 57 78 27 11, bruno.bourbonnaud@caceis.com

Arnaud GAREL-GALAIS, Group Head of Coverage & Business Development - PERES Global Services
+33 1 57 78 15 74, arnaud.garel@caceis.com

Gilles CORCOS, Group Head of Financing - PERES Global Services
+33 1 57 78 02 73, gilles.corcos@caceis.com

INDOSUEZ WEALTH MANAGEMENT

Emmanuel SIMON, Head of Business Development France
+ 33 1 40 75 62 03, emmanuel.simon@ca-indosuez.fr

CRÉDIT
AGRICOLE
GROUP

